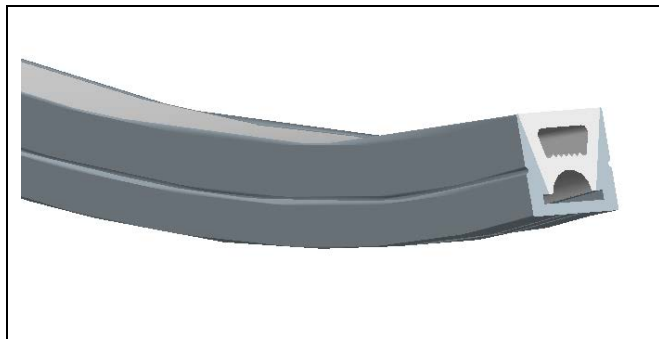
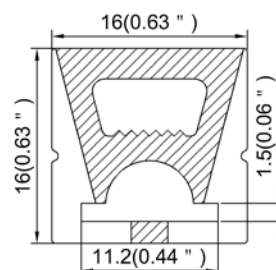


Model : S1616-T



Dimension



Specification

Aluminum Profile	/
Diffuser	Silicon Co-extrusion
Length	5000mm
Weight	0.234kg/m
Max LED Strip Width	10mm
Max Power	10W/m
Beam angle	/
Finish	White
Installation	Surface

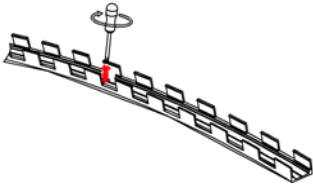
Accessories

End cap with hole(ABS)	End cap without hole(ABS)	LED Strip	Profile for mounting(metal)
Bendable profile for mounting (metal)	Mounting clip (metal)	Aluminum profile for mounting	

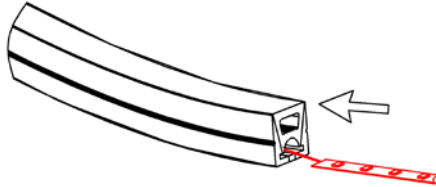
Steps of Installation

The first option

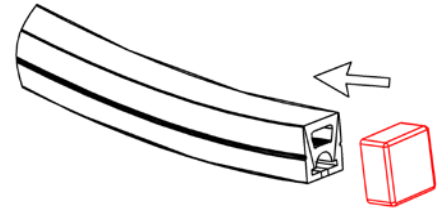
1. Install the mounting parts. (show as above)



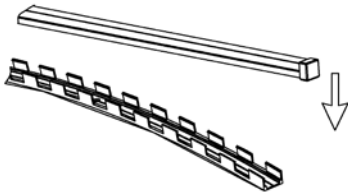
2. Stick the LED strip



3. Click the end caps

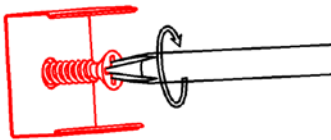


4. Installing the fixture with mounting parts what you need.

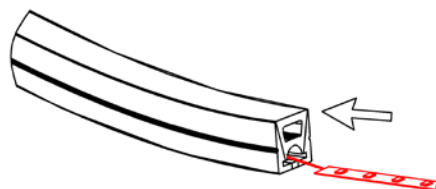


The second option

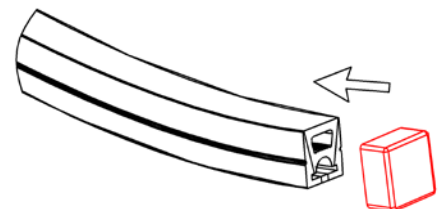
1. Install the mounting clip



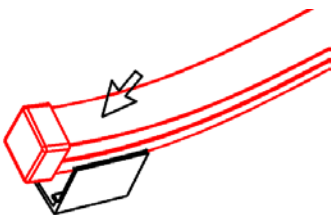
2. Stick the LED strip



3. Click the end caps



4. Install the lamp



5. Installation completed

