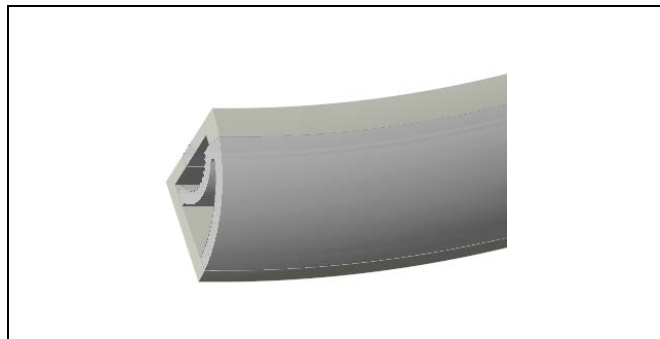
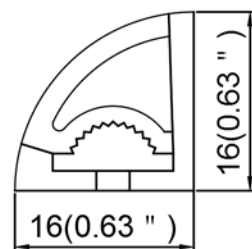


Model : S1616-C







Dimension



Specification

Aluminum Profile	/
Diffuser	Silicon Co-extrusion
Length	5000mm
Weight	0.157kg/m
Max LED Strip Width	10mm
Max Power	10W/m
Beam angle	100°
Finish	White
Installation	Surface

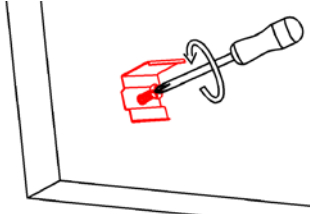
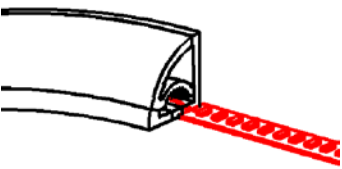
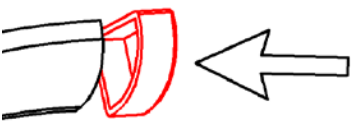

Accessories

			
End cap with hole	End cap without hole	LED Strip	clip(metal)

Steps of Installation

--

SPECIFICATION

<p>1. Install the mounting clip</p> 	<p>2. Stick the LED strip</p> 	<p>3. insert the end caps</p> 
<p>4. Install the profile</p> 	<p>5. Installation completed</p> 